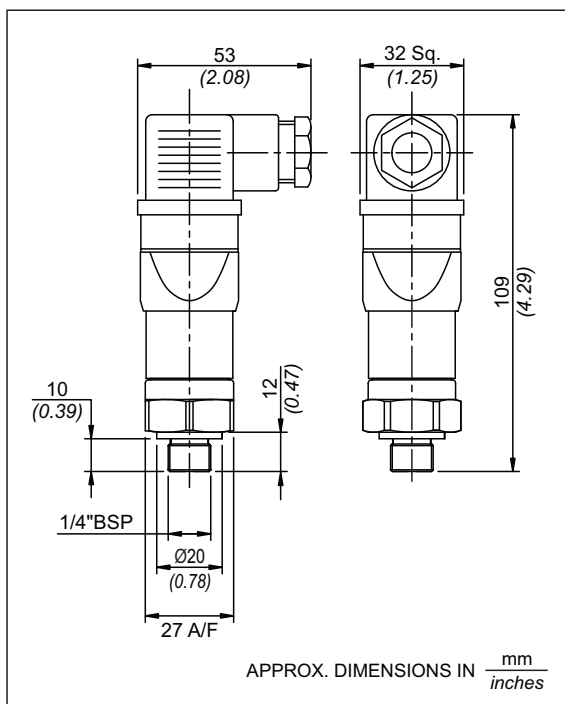


# SE PISTON SWITCHES (DIN Connector type)



## General information:

SE series piston pressure switches are low cost options. They are generally used where size is a constraint. Typical applications are to sense oil pressure in power packs. Can also be used for several automation applications.

## Features:

- Compact
- Lightweight (Approx. 0.11 Kg.)
- Normally closed (NC) or normally open (NO) or SPDT
- Electrical rating: 5A, 250VAC; 0.2A, 250 VDC (res.)
- Switching point easy to adjust
- Material : Body - Aluminium; Pressure Housing - SS
- Wetted parts : SS316L, CS, Viton, Piston
- Pressure port : 1/4" BSP(M), other sizes available

## Range Selection Table

| Range Code | Range bar (psi)           | Differential bar (psi) | Maximum Working Pressure bar (psi) |
|------------|---------------------------|------------------------|------------------------------------|
| 040        | 5 - 40<br>(72.5 - 580)    | 5<br>(72.52)           | 80<br>(1160.31)                    |
| 100        | 10 - 100<br>(14.5 - 1450) | 12<br>(174.05)         | 120<br>(1740.45)                   |
| 200        | 7 - 200<br>(101.5 - 2900) | 24<br>(348.09)         | 200<br>(2900.75)                   |

## How to order SE Series Subminiature Switches

| Group 1  | Group 2          | Group 3           | Group 4                                  | Group 5   | Group 6                       | Group 7   | Group 8          |
|--|------------------|-------------------|--|---|-------------------------------|---|------------------|
| Non Standard Allocation  | Model            | Terminal Type     | Switch Type                              | Range Code  | Operating Type                | Pressure Port Material / Size                     | Piston           |
| <input type="checkbox"/> A prefix "N" is used in the model code in case of any non standard options/ accessories that are provided with the switches. Will be given by manufacturer, only after agreement of supply details with customer. | SE = Piston Type | 3 = DIN connector | PFO = Pressure Switch Fixed Differential | 040 = (5 - 40)<br>100 = (10 - 100)<br>200 = (7 - 200) | A3 = With Silver Contact SPDT | S3 = SS316L / 1/4" BSPM<br>B3 = Brass / 1/4" BSPM | 0 = Carbon Steel |

e.g.: A single piston switch, high pressure range from 0.1 - 1.0 bar in uncalibrated style with mild steel pressure port & a piston shall be specified by

| Group 1                  | Group 2 | Group 3 | Group 4 | Group 5 | Group 6 | Group 7 | Group 8 |
|--------------------------|---------|---------|---------|---------|---------|---------|---------|
| <input type="checkbox"/> | SE      | 1       | PFO     | 040     | A1      | M3      | 0       |

Please specify full model number to avoid ambiguity. If only the first two groups are specified while ordering, switches with standard wetted parts will be supplied.